

Company **Profile**



**MOHAMMED HASSAN
ALMARHOON FOR CONTRACTING
EST**

FOR BUILDING CONTRACTING

ABOUT US



MOHD H. AL MARHOON CONT EST was formed in 2011 as a subsidiary of RTR GRP Office Supplies Ltd and incorporated in 2013 by renowned IT professionals in Kenya. Our primary objective is to provide computer products and services to organizations and companies in the efficient application of Information Technology.

MOHD H. AL MARHOON CONT EST key activities comprise the supply, design and installation of all types of RTR GRP GRE FRP PIPE LINE WORK. These include; Pipe elbow installation, project area rtr fire water line and water line sewer line all rtr gre grp frp pipe line work

MOHD H. AL MARHOON CONT EST employs qualified and innovative individuals who have the necessary skills and years of experience to respond to today's, challenging needs. Exceeding client satisfaction motivates MOHD H. AL MARHOON CONT EST team of staff.

OUR VALUES

The company unholds the following values as a guideline to its operation and business transactions:

- Commitment
- Customer Value
- Team work
- Professional
- Flexibility/Adaptability
- Social Responsibility

GENERAL INFORMATION

- Samsung Engineer Company
- TR Saudi Company
- Sky Arabia
- Frist Time
- Marafiq Power And Water Plant
- Sidem Saudi
- Al Fatah Water Plant
- Sabic



OBJECTIVE

Our objectives are to assist clients with various implementations of their projects, and we have confidence in our ability to generate the consensus and commitments necessary to succeed. We are prepared to stand behind our recommendations and to assist our clients with obtaining appropriate approvals to proceed.

MISSION STATEMENT

To help customers build a reliable, secure, manageable and flexible RTR Pipe that establishes a foundation for clients to meet their business objectives.



OUR SERVICES



RTR



GRP & GRE



FRP



Fiber Glass Work

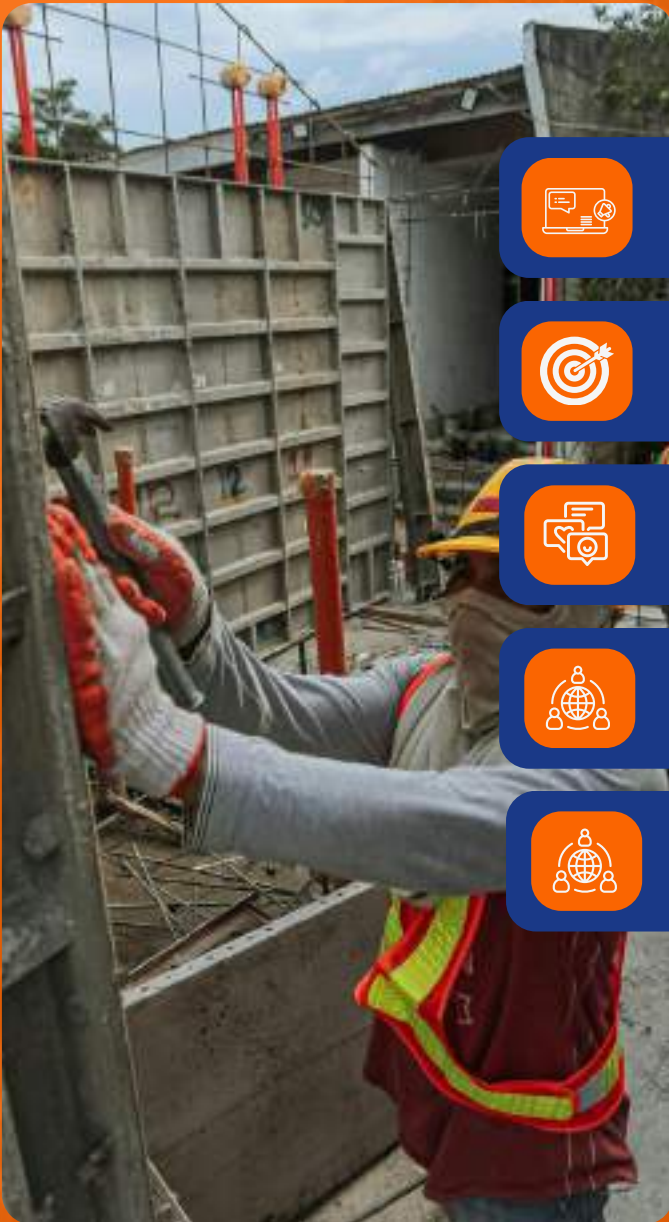


Sewer Line



Supplies OF General Work

OUR CONTRACTS



Sky Arabi Company



Global Souch Company



KCC Company



First Time Company



Sidem Marafiq

RTR PIPE FITTINGS

RTR (Reinforced Thermosetting Resin) pipe fittings are components for piping systems made from a composite of glass fibers and thermosetting resins, offering high strength and corrosion resistance.

They are used in demanding industrial applications like oil and gas, chemical processing, and water treatment, as well as in HVAC systems for carrying refrigerants and fluids. Fittings like elbows, tees, and caps are engineered to connect RTR pipes and handle high-pressure and aggressive chemical environments.



GRP & GRE FITTINGS

GRP (Glass Reinforced Plastic) and GRE (Glass Reinforced Epoxy) fittings are components used to connect, adapt, or control the flow in pipe systems made from fiberglass-reinforced composites, with the main difference being the type of resin used.

GRP fittings typically use isophthalic resin, while GRE fittings use epoxy resin, which makes GRE suitable for higher-temperature applications and harsher industrial environments due to its superior chemical and corrosion resistance.





FRP-PIPE FITINGS

FRP (Fiber-Reinforced Plastic) pipes and fittings are corrosion-resistant, durable composite materials used for transporting fluids in demanding industries like chemical processing, water treatment, and power generation. They are made from glass fibers embedded in a polymer resin, offering advantages like light weight, long life, and high strength.

FIBER GLASS WORK

Fiberglass work is a process of using fiberglass fabric and resins to create strong, lightweight composite materials for applications like boat building, construction, and automotive parts.

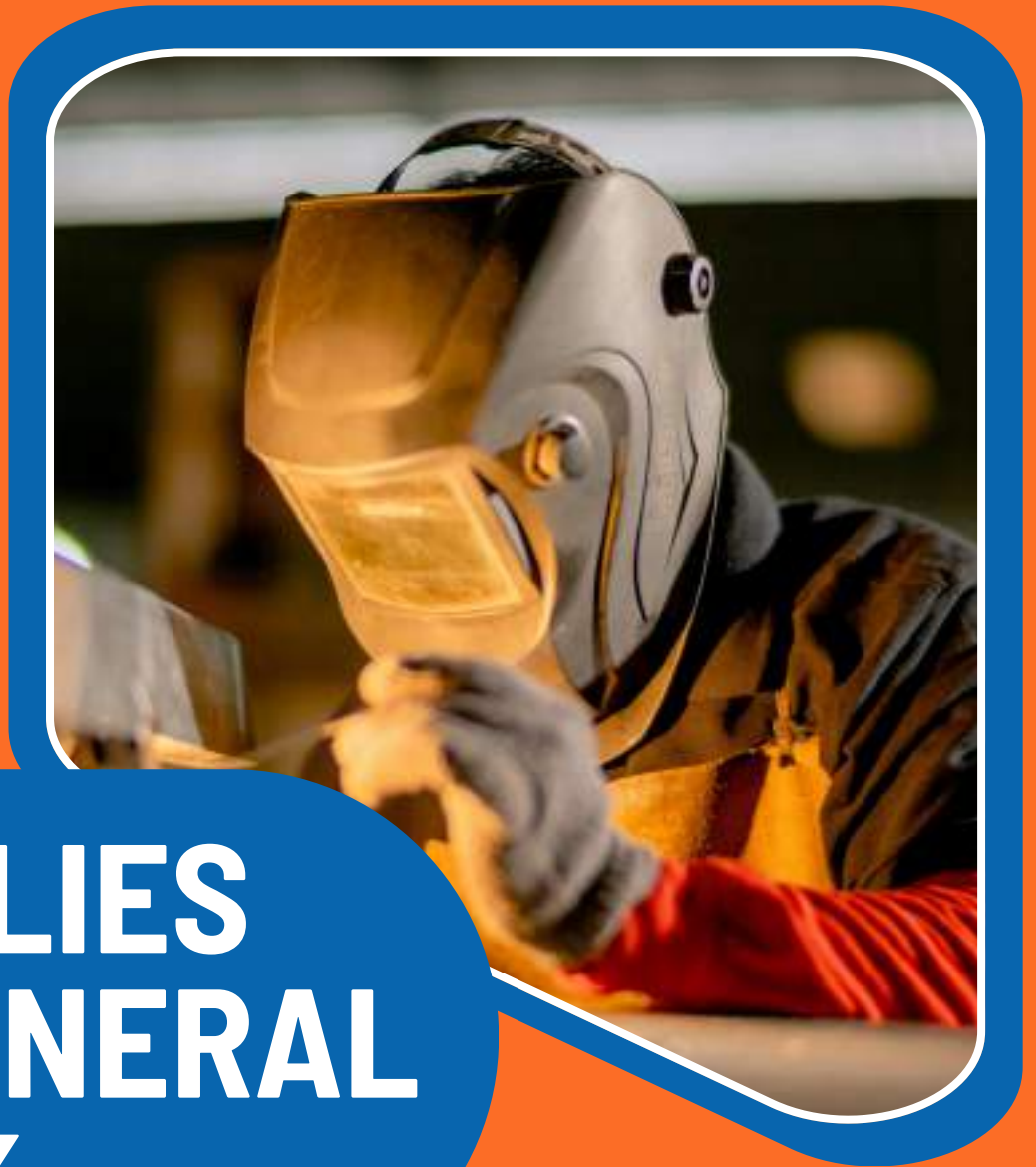
The process involves preparing the surface, cutting the fiberglass fabric, mixing the resin and catalyst, applying the resin to the surface, and carefully laying the fabric, removing air bubbles, and allowing it to cure. It's important to wear appropriate safety gear, as fiberglass fibers can be an irritant.



SEWER LINE



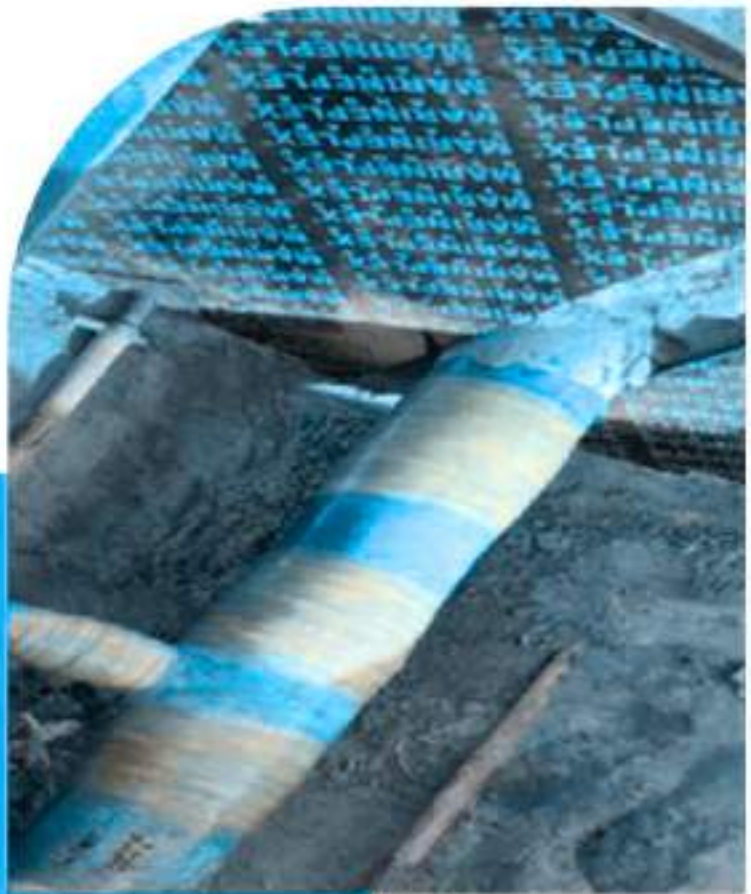
A sewer line is an underground pipe that carries wastewater and sewage from buildings to a public sewer system or a private septic tank. This system protects public health and the environment by transporting waste to treatment plants where it is cleaned before being released. Sewer lines can be made from materials like PVC or ABS plastic, and a building's connection typically leads to the main sewer line in the street.



SUPPLIES OF GENERAL WORK

Supplies for general work include essential hand tools (wrenches, screwdrivers, hammers), material handling equipment (hand trucks, dollies), and critical personal protective equipment (PPE) such as hard hats, safety glasses, gloves, and steel-toed boots. The specific tools and supplies can also include basic power tools (drills, saws) and versatile, adaptable workwear with pockets and protective features.











CLIENTS WE ARE FOCUSING

أمينات
Aminat

أرامكو السعودية
saudi aramco



الصحراء
للپتروكیمایات
sahara petrochemicals

المتقدمة
Advanced



شيفرون العربية السعودية
Saudi Arabian Chevron



شركة الزيت العربية السعودية
KOC

شركة الزيت العربية السعودية
KOC

شركة الزيت العربية السعودية
KOC



التصنيع
TASNEE

سابك
SABIC

نماء
NAMA

جنا
JANA

سبكيم
Sipchem
excellence everywhere



HSE POLICY

It is the policy of to ensure the protection of the environment and to create a safe and healthy working condition at all workplace for workers, visitors, clients, partners, shareholders, the community and all other relevant interested parties.

We are committed to achieve its vision for HSE excellence We'll examine what is quality management, how service quality is determined, what can stand in the way of quality programs, and what processes you can put in place to ensure the highest quality for any job.

Provide safe and healthy working place and conditions for the prevention of work-related injury and ill health.

Promote environmental protection and prevention of pollution within the company. Reduce, and striving to eliminate, the environmental company's activities, operations and impacts associated with services.





Let's Work Together

Website

WhatsApp

Location



0592329710



Info@mhasa.com



mha-est.working.trade



Jubail and Khobar, Qatif Saudi
Arabia